

VITRO X1



EUROPEAN
PRODUCT
DESIGN
AWARD

2022

NY
NEW YORK

PRODUCT DESIGN AWARDS

2023 WINNER
SILVER



COFFETEK

PINPOINT STYLE & COFFEE QUALITY

Vitro X1 is an elegant and contemporary looking compact coffee machine that has been developed with attention to detail and with the best material finishes, providing it with a unique premium identity. Its design compliments any area in an office, hotel, leisure centre or convenience store.




The Vitro X1 is also very easy to use and maintain which delivers consumers with a consistent high standard coffee experience. It offers velvety chocolates and the very best coffee preparation, from the bean to the cup. A full process of coffee grinding, tamping and brewing are made automatically in a matter of seconds - leaving the consumer with the most important job - enjoying a simply great coffee experience!.

The independent hot water serving area allows the consumer to prepare tea & delicate infusions at ease with clean fresh hot water.

VITRO X1 Espresso

Vitro X1 brings complete peace of mind in busy coffee service environments with a consumption of up to 150 cups per day.

Machine Capacity






-  150 cups Espresso
-  150 cups Cappuccino
-  40 cups Hot Chocolate



Product

-  Espresso
-  Solubles
-  Independent hot water spout

Machine features & options

-  Removable Tray
-  2 cup holder positions
-  Time doser
-  Touch selection
-  Distance selection
- AZK V30**
Espresso group

Easy to refill coffee beans and soluble ingredients

The filling process can be done from the top, without opening the door, in a straightforward and simple way.



Easy to clean and maintain

Front removal of liquid waste tray, with no need to open the machine.

User friendly touchless selection

With up to 12 speciality coffee options available, you can make your selection using Touch or our new patented Distance Selection technology - choose your favourite.





ADAPTABLE TO SUIT ANY LOCATION

Vitro X1 has been designed to suit different operational business models by offering a myriad of accessories, consumer payment options and functioning modes such as the AZK V30 variable espresso group, which allows you to adjust each recipe to your customer's taste, offering the possibility to set a dose of 7 to 14 grams of coffee.

Vitro X1 incorporates a 700-cc boiler becoming the perfect solution for convenience stores, where service needs to be intuitive and fast. It is also the perfect solution to promote a cooperative culture in the office, offering high quality coffee, a premium user experience, and a comprehensive hot drink offer.



Base cabinet kit

Ready to install a coin validator (850 mm.)



MDB Validator module kit

Ready to install a coin validator



MDB Cashless module kit

Ready to install a cashless system



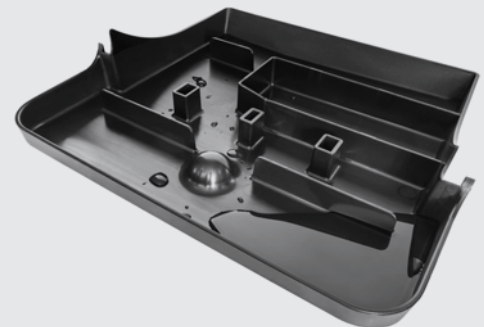
AZK V30 Espresso Group

7-14 g



Easy to clean liquids tray

The liquids tray has a capacity of 1.2l. The design has a built-in wave breaker to avoid unwanted splashes and spills during transport for cleaning.



Illuminated dispense area

Illuminated dispense area providing an improved user experience.



Easy label changing

The machine allows easy label replacement to adapt the panel to the tastes of your customers.

A LIFETIME RELATION WITH COFFEE

We have over 30 years experience in technological innovations for the preparation of hot beverages in hotel, catering, office and convenience store environments. Taking great care with every detail of the process in order to provide the definitive experience in the world of coffee.



SPECIFICATIONS:

		VITRO X1 ESPRESSO
CAPACITY	No. of coffee bean hoppers	1
	No. of soluble product canisters	2
	Product capacity	Coffee beans 1200 g (adaptable to 2200 g) Powdered milk 600 g Chocolate 800 g
TECHNICAL INFORMATION	Weight	42 kg
	Brewing systems	Espresso
	Name of the brewing system	AZK V30 (7-14 g)
	No. of mixers	1
	Name of grinder	M03 Horeca Performance
	No. of grinders	1
	Boiler type	Espresso
	Boiler capacity	700 cc
	Selection Type	Touch or Distance Selection Technology
	No of selections	12
	Voltage	230 V
	Maximum Power	1800 W
	Width	337 mm
Height	672 / 742 mm	
Depth	505 mm	

Spain
Avda. San Silvestre, s/n
31350 Peralta (Navarra)
Tel: 948 709 709
www.azkoyenvending.es

U.K.
Unit 1, Interplex 16,
Ash Ridge Road
Bradley Stoke, Bristol,
BS32 4QE, England
Tel: 01275 844 471
www.coffetek.co.uk

Germany
Am Turm 86
53721 Siegburg
Tel: 02241-595 70
www.azkoyenvending.de

France
6 Allée de Londres
Le Madras Bat C2
91140 Villejust
Tel: 01 69 75 42 10
www.azkoyenvending.fr

Portugal
Bela Vista Office
Estrada de Paço
de Arcos, 66
2735-336 Cacem
Tel: 1210 985 212

Colombia
Via la Virginia, Corregimiento
Caimalito. Bodega B-16.
Zona Franca Internacional
de Pereira
Tel: +57 6 31 105 13
www.azkoyenandina.com

United States
3809 Beam road, Suite H
Charlotte, NC 28217
Tel: +1 (980) 237-5065
www.azkoyenvendingusa.com